

Duration of major depressive episodes in the general population: results from The Netherlands Mental Health Survey and Incidence Study (NEMESIS)[†]

JAN SPIJKER, RON DE GRAAF, ROB V. BIJL, AARTJAN T. F. BEEKMAN, JOHAN ORMEL and WILLEM A. NOLEN

Background Data on the duration of major depressive episodes (MDE) in the general population are sparse.

Aims To assess the duration of MDE and its clinical and socio-demographic determinants in a study group drawn from the general population with newly originated episodes of major depression.

Method The Netherlands Mental Health Survey and Incidence Study is a prospective epidemiological survey in the adult population ($n=7076$), using the Composite International Diagnostic Interview. Duration of MDE over 2 years was assessed with a Life Chart Interview.

Results The median duration of MDE was 3.0 months; 50% of participants recovered within 3 months, 63% within 6 months, 76% within 12 months and nearly 20% had not recovered at 24 months. Determinants of persistence were severity of depression and comorbid dysthymia. A recurrent episode predicted shorter duration.

Conclusions Although half of those affected with MDE recovered rapidly, the risk of chronicity (duration 24 months or more) was considerable. This underlines the necessity of diagnosing and treating those at risk.

Declaration of interest The study was supported by The Netherlands Ministry of Health, Welfare and Sport, the Medical Sciences Department of The Netherlands Organisation for Scientific Research and the National Institute for Public Health and Environment.

The study of the natural history of major depressive episodes and its determinants is essential to understanding the nature of the illness and may guide the development of more effective treatment strategies (Judd, 1997). Duration of major depressive episodes has been found to vary widely, with median durations between 3 months and 12 months and rates of chronicity (duration 24 months or more) between 10% and 30% (Keller *et al*, 1982, 1992; Angst, 1988; Coryell *et al*, 1994; Angst & Preisig, 1995; Mueller *et al*, 1996; Solomon *et al*, 1997; Furukawa *et al*, 2000). The variation may be explained by different definitions of recovery. Moreover, the previous studies were subject to two kinds of bias. Lead-time bias arises because participants with depression were not recruited at a similar point in time in the course of the disorder; mostly, prevalent cases were included. Referral filter bias arises because selected populations of in- or out-patients with depression were studied. It is expected that both kinds of bias lead to an overrepresentation of chronic cases (Cohen & Cohen, 1984). To avoid these sources of bias, the duration of newly originated major depressive episodes should be studied in people with depression selected from the general population. In a 13- to 15-year follow-up of the Baltimore site of the Epidemiologic Catchment Area study, a median duration of major depressive episodes of 8–12 weeks was found (Eaton *et al*, 1997). The Life Chart Interview (LCI) (Lyketsos *et al*, 1994) was used to determine the onset and duration of major depressive episodes. Owing to the long follow-up period, dating of episodes was global and limited to 1 year. With regard to determinants of episode duration, living without a partner (Mueller *et al*, 1996), comorbid dysthymia (Keller *et al*, 1982) and severity of depression (Keller *et al*, 1992; Mueller *et al*,

1996; Furukawa *et al*, 2000) have been found to predict longer duration of episode.

The primary aims of our study were (a) to investigate duration of major depressive episodes in detail over a period of 2 years in a cohort with newly originated episodes (first or recurrent) from the general population, and (b) to study potential socio-demographic and clinical determinants of episode duration. A secondary aim was to assess the effect of referral filter bias (by comparing episode duration across levels of care).

METHOD

Sampling

Data were derived from The Netherlands Mental Health Survey and Incidence Study (NEMESIS). Methods are described elsewhere (Bijl *et al*, 1998; Vollebergh *et al*, 2001). Briefly, NEMESIS is a prospective psychiatric epidemiological survey in the Dutch adult general population (aged 18–64 years) with three waves, in 1996 (T_0), 1997 (T_1) and 1999 (T_2). It is based on a multi-stage, stratified, random sampling procedure. One respondent was randomly chosen in each selected household. Interviewers made up to 10 telephone calls or visits to an address at different times of the day and days of the week to make contact. To optimise response and offset any seasonal influences, the initial fieldwork extended from February to December 1996. In the first wave, sufficient data were gathered on 7076 persons, a response rate of 69.7%. At T_1 , the second wave, 1458 respondents (20.6%) were lost to attrition, and at T_2 a further 822 (14.6%) were lost. Altogether, 4796 respondents were interviewed at all three waves.

Psychopathology over the preceding 12-month period did not have a strong impact on attrition: at T_1 agoraphobia (odds ratio 1.96) and social phobia (OR 1.37), and at T_2 major depression (OR 1.37), dysthymia (OR 1.80) and alcohol dependence (OR 1.83), adjusted for demographic factors, were associated with attrition (de Graaf *et al*, 2000a, b).

Diagnostic instrument

Diagnoses of psychiatric disorders according to DSM-III-R (American Psychiatric Association, 1987) were based on the Composite International Diagnostic Interview (CIDI), version 1.1 (computerised version; Smeets & Dingemans, 1993). The CIDI is

[†]See editorial, pp. 181–183, this issue.

a structured interview developed by the World Health Organization (1990) and has been found to have acceptable inter-rater reliability and test-retest reliability for most diagnoses, including major depression (Wittchen, 1994). The following DSM-III-R diagnoses are recorded in the NEMESIS data-set: schizophrenia and other non-affective psychotic disorders; mood disorders (bipolar disorder, major depression, dysthymia); anxiety disorders (panic disorder, agoraphobia, simple phobia, social phobia, generalised anxiety disorder, obsessive-compulsive disorder); eating disorders; and psychoactive substance use disorders (alcohol or drug misuse and dependence, including use of sedatives, hypnotics and anxiolytics).

Study cohort

In order to include only newly originated episodes of major depression (first or recurrent cases), respondents with a diagnosis of 2-year prevalence of major depression at T_2 but no diagnosis of 1-month prevalence at T_1 were identified ($n=273$). Those diagnosed with bipolar disorder or a primary psychotic disorder were excluded.

Characteristics of participants with depression

Socio-demographic variables

Variables recorded at T_0 were gender, age, educational attainment, cohabitation status and employment status.

Clinical factors

Based on the CIDI, the following information on the index episode of DSM-III-R major depression was obtained:

- severity of depression, categorised as mild-moderate *v.* severe with or without psychotic features according to DSM-III-R;
- first or recurrent episode according to the DSM-III-R;
- comorbidity with other DSM-III-R Axis I disorders. The comorbid disorders included were dysthymia, anxiety disorders and substance misuse or dependence. Psychiatric comorbidity was assessed without applying the hierarchical DSM rules.

Care utilisation

At T_2 respondents were asked whether they had received help for mental problems

within the past 24 months. We distinguished three levels of care:

- no care or exclusively informal care (e.g. from an alternative care provider, traditional healer, self-help group, telephone helpline or physiotherapist);
- primary care (general practitioner);
- mental health system care, including ambulatory mental health care (crisis care, or treatment given by a community mental health care institute, psychiatric out-patient clinic at a psychiatric or general hospital, alcohol and drugs counselling centre, psychiatrist, psychologist or psychotherapist in private practice, or psychiatric day care centre) and residential mental health care (in a psychiatric hospital, in-patient addiction clinic, psychiatric division of a general hospital, or sheltered accommodation).

Duration of major depressive episode

The duration of major depressive episodes was assessed retrospectively at T_2 , using the LCI (Lyketsos *et al.*, 1994). To improve recall, we used memory cues such as personal events, birthdays or holidays in the past 2 years. Psychopathology was assessed over periods of 3 months, and for each period we recorded:

- duration of depressive symptoms – less than half, half, most, or whole of the 3-month period (for the analyses this was dichotomised as ‘6 weeks or less’ *v.* ‘more than 6 weeks’);
- severity of depressive symptoms – no or minimal severity, mild, moderate, severe, or very severe (dichotomised as ‘no or minimal severity’ *v.* ‘at least mild severity’).

Using this information on duration and severity, each 3-month period was scored as follows: i, no or minimal depressive symptoms; ii, at least mild severity with brief duration (≤ 6 weeks); iii, at least mild severity with longer duration (> 6 weeks). Recovery was defined as no or minimal depressive symptoms in a 3-month period, thereby extending the US National Institute for Mental Health (NIMH) definition of recovery (Keller *et al.*, 1992) by 1 month. No distinction was made between remission and recovery (Frank *et al.*, 1991) because the data did not allow for such precision. The duration of major depressive episodes was calculated by summing the

3-month periods until recovery. A single period ii or a period ii at the beginning or at the end of a major depressive episode was counted as 1.5 months; all other periods were counted as 3 months.

Because administration of the LCI was time-consuming and not relevant for the entire NEMESIS sample, and because interviewers were not aware of DSM-III-R diagnoses derived from the CIDI, the use of the LCI was made dependent on a probe question about whether the respondent had felt depressed for any period of more than 2 weeks since T_0 . In the study cohort, 23 (8.4%) of the 273 respondents did not respond affirmatively to the probe question. No significant differences were found between probe-question-positive responders and probe-question-negative responders on socio-demographic and clinical variables. The duration of major depressive episodes was determined for the first depressive episode recorded in the LCI. Ten respondents responded affirmatively to the probe question but reported no 3-month period of depressive symptoms; they were classified as having had a major depressive episode of brief duration, set arbitrarily at 0.5 month.

Analyses

Duration of major depressive episodes was calculated using survival analysis. The cumulative probability of recovery was estimated with the Kaplan-Meier product limit (Hosmer & Lemeshow, 1999). This technique describes all respondents over time, either to the event of interest (in this case, recovery) or until they are lost to further follow-up (censoring). The effect of censored data is minimised by including all respondents who began the observation period, regardless of whether they finished it. Median survival time is the first recovery at which cumulative survival reaches 0.5 (50%) or less. Mean survival time is not the arithmetic mean but is equal to the area under the survival curve for the uncensored cases. We used the statistical package SPSS for Windows, version 8.0 (SPSS, 1998). Survival curves for cohorts selected from different levels of care were compared using the log rank test.

A stepwise Cox proportional hazards model was used to test the association between socio-demographic and clinical variables and duration of major depressive episodes. The hazard ratio is the increase (or decrease) in risk of the event of interest,

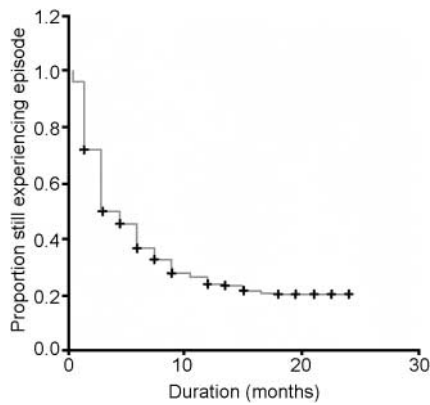


Fig. 1 Survival curve of a cohort ($n=250$) with newly originated (first or recurrent) major depressive episodes in the general population; +, censored cases.

Table 1 Socio-demographic and clinical characteristics and care utilisation of a cohort ($n=250$) with newly originated major depressive episodes (first or recurrent) in the general population

Variable	%
Socio-demographic variables	
Gender (female)	66.8
Age (years)	
18–24	6.4
25–34	36.4
35–44	26.8
45–54	21.1
55–64	9.2
Education	
Low	3.6
Medium	37.6
High	31.2
University	27.6
Living with partner (yes)	63.6
Paid employment (yes)	70.0
Clinical variables	
Severe depression	30.4
Recurrent depression	43.2
Comorbid dysthymia	10.0
Comorbid anxiety disorder	34.0
Comorbid substance misuse/dependence	10.4
Care utilisation	
No professional care	32.8
Primary care	38.8
MHS care	28.4

MHS, mental health system.

Table 2 Hazard ratios of determinants of episode duration (bivariate and multivariate models)

Determinant	Bivariate model			Multivariate model		
	Hazard ratio	95% CI	P	Hazard ratio	95% CI	P
Severe depression	0.67	0.49–0.92	0.02	0.70	0.51–0.97	0.03
Recurrent depression	1.67	1.25–2.22	<0.01	1.62	1.21–2.16	<0.01
Comorbid dysthymia	0.47	0.26–0.84	0.01	0.55	0.30–1.00	0.05

incurred by the presence or absence of a variable.

RESULTS

Duration of major depressive episode

In 64 cases (25.6%) the follow-up period ended before recovery (censored cases). The survival curve is presented in Fig. 1. The median time to recovery was 3.0 months (95% CI 2.2–3.8) and the mean time to recovery with the upper limit of 24 months was 8.4 months (95% CI 7.3–9.5). Of the respondents, 50% (95% CI 44–56) recovered within 3 months; 63% (95% CI 57–69) within 6 months; 76% (95% CI 70–82) within 12 months, and 80% (95% CI 74–86) within 21 months. All cases with a duration greater than 21 months were censored cases, so cumulative survival at 24 months could not be calculated but was near 80%.

Determinants of episode duration

More than two-thirds of the respondents were female. In 43.2% the index major depressive episode was a recurrent episode and comorbid dysthymia was infrequent (Table 1).

None of the socio-demographic variables predicted the outcome. Of the clinical variables, the presence of comorbid dysthymia and severity of the index episode predicted longer episode duration, and the index episode being a recurrent episode predicted shorter episode duration (Table 2). Entering these three variables into a multivariate Cox regression model (method backwards) did not alter the hazard ratios substantially but the presence of comorbid dysthymia was only just statistically significant.

We also performed survival analyses for these three clinical variables (Fig. 2). Severe depression lengthens the median duration from 3.0 months (95% CI 2.5–3.5) to 7.5 months (95% CI 5.1–10.0) and the mean duration from 7.5 months (95% CI

6.2–8.8) to 10.5 months (95% CI 8.5–12.5). The presence of comorbid dysthymia lengthens the mean duration from 7.7 months (95% CI 6.6–8.8) to 13.7 months (95% CI 9.5–18.0). No median duration with comorbid dysthymia was determined, as cumulative survival did not reach 0.5 (50%). A recurrent episode shortens the median duration from 6.0 months (95% CI 4.3–7.7) to 3.0 months (95% CI 2.4–3.6) and the mean duration from 10.2 months (95% CI 8.6–11.8) to 6.1 months (95% CI 4.7–7.5).

Duration of episode across different levels of care

Of all the respondents, 67.2% had received professional help for their mental problems within the past 24 months (Table 1). The survival curves for respondents stratified for different levels of care are shown in Fig. 3. In those without professional care the median duration of major depressive episodes was 3.0 months (95% CI 2.1–3.9) and the mean duration (with the upper limit of 24 months) was 8.1 months (95% CI 6.0–10.1). In respondents with only primary care the median duration of major depressive episodes was 4.5 months (95% CI 3.4–5.6) and the mean duration (with the upper limit of 24 months) was 7.8 months (95% CI 6.3–9.4). In those with mental health system care the median duration of major depressive episodes was 6.0 months (95% CI 3.9–8.1) and the mean duration (with the upper limit of 24 months) was 9.5 months (95% CI 3.9–8.1). Statistically, the differences in time to recovery in the different modalities of care were not significant (log rank 1.79, d.f.=2, $P=0.41$).

DISCUSSION

This is the first detailed estimation of duration of major depressive episodes in the general population. We found a median duration of episodes of 3.0 months, which

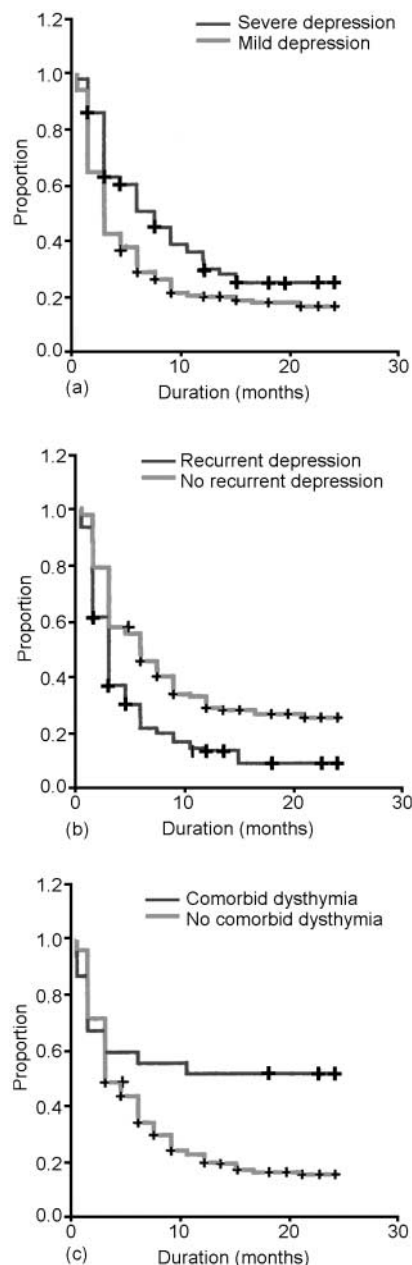


Fig. 2 Survival curves of a cohort ($n=250$) with newly originated (first or recurrent) major depressive episodes in the general population influenced by clinical variables: (a) severity of depression; (b) recurrence of depression; (c) comorbid dysthymia; +, censored cases.

is in the lower range of duration found in clinical populations (Keller *et al*, 1982; Angst, 1988; Keller *et al*, 1992; Coryell *et al*, 1994; Angst & Preisig, 1995; Solomon *et al*, 1997; Furukawa *et al*, 2000) but in line with findings from the general population (Eaton *et al*, 1997). Around 20% of those with depression had a chronic course (duration 24 months or more), which is

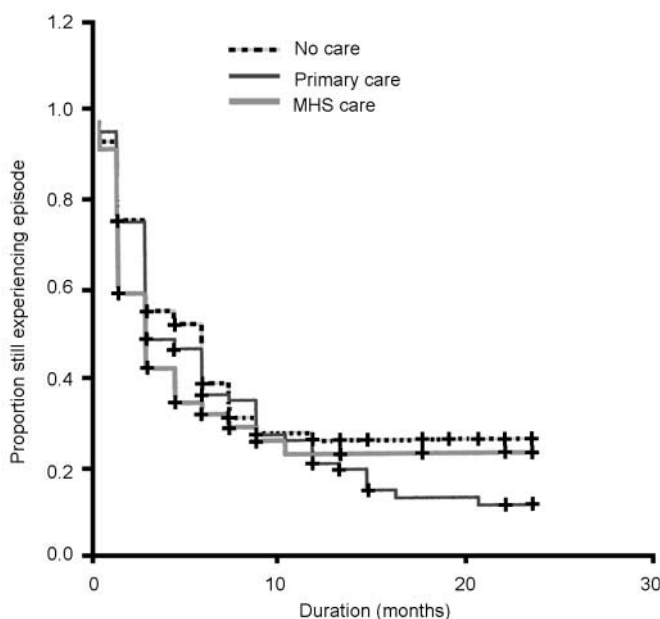


Fig. 3. Survival curves of a cohort ($n=250$) with newly originated (first or recurrent) major depressive episodes in the general population, according to whether they received mental health system (MHS) care, primary care or no professional care; +, censored cases.

similar to findings in clinical populations (Keller *et al*, 1982; Angst, 1988; Keller *et al*, 1992; Coryell *et al*, 1994; Angst & Preisig, 1995; Solomon *et al*, 1997; Furukawa *et al*, 2000). Determinants for persistence were similar to those in clinical populations. Clinical characteristics such as the severity of the index episode and the presence of comorbid dysthymia were predictors of a longer duration. Moreover, we found a shorter duration for recurrent episodes. This differs from the clinical population of the NIMH Collaborative Depression Study (Solomon *et al*, 1997), in whom a similar duration of subsequent episodes was found. Shortening of duration with subsequent episodes might be a characteristic of the general population, as Eaton *et al* (1997) also found.

The high rate of chronicity in the general population is the most conspicuous and unexpected finding of our study. In both treated and untreated people with depression the risk of a chronic course (duration 24 months or more) was considerable. Referral filter bias could not be demonstrated, as no association was found between level of care and episode duration. This is remarkable since we found level of care to be associated with more severe depression earlier (Spijker *et al*, 2001). An explanation for the lack of association between episode duration and level of care could be that hospitalised patients with the most severe

forms of psychopathology were probably underrepresented in NEMESIS.

The strength of our design is that it enabled us to study the duration of major depressive episodes in a cohort with newly originated episodes from the general population, avoiding lead time and referral filter bias. A limitation of the method employed is that duration of episodes was retrospectively assessed using the LCI. We believe, however, that this method of assessment of duration, with a combination of prospectively (CIDI) and retrospectively (LCI) obtained data, is the best in practice for general population surveys. The LCI proved practicable and useful (Eaton *et al*, 1997) and the test-retest and interrater reliability of a similar life chart instrument was satisfactory (Hunt & Andrews, 1995). We recognise that the reliability of retrospectively assessed psychopathological data is questionable owing to recall problems, but this improves with shorter time intervals (Lyketsos *et al*, 1994), as in our design.

It was not possible using the LCI to determine whether a period with depressive complaints continuously met the DSM-III-R criteria for a major depressive episode. Therefore, in our analyses of duration we included both the major depressive episode and its preceding and succeeding sub-threshold depressive syndromes. Also, cases of comorbid dysthymia were included

(10% of the respondents), somewhat increasing the chronicity rate. However, the inclusion of sub-threshold depressive syndromes and dysthymia reflects the naturalistic course of major depressive episodes better and may have more clinical relevance (Judd *et al*, 1998).

In conclusion, the natural course of major depressive episodes in the general population has remarkable characteristics: although half of those affected recovered rapidly (within 3 months), the rate of recovery slowed towards 12 months, virtually coming to a standstill after 12 months. Almost 20% of the participants with depression had not recovered at 24 months. These findings have important implications for prevention and treatment. Both in treated and in non-treated participants the risk of persistence was considerable. For untreated individuals it is essential that the depressive condition is detected and that treatment is offered. For treated individuals it is essential to identify lack of treatment response and adjust the therapy accordingly. The clinical characteristics of the index episode seem to be the best clue to identifying people at risk of non-recovery; but a more detailed risk profile is certainly needed.

REFERENCES

- American Psychiatric Association (1987)** *Diagnostic and Statistical Manual of Mental Disorders* (3rd edn, revised) (DSM-III-R). Washington, DC: APA.
- Angst, J. (1988)** Clinical course of affective disorders. In *Depressive Illness: Prediction of Course and Outcome* (eds T. Helgason & R. J. Daly), pp. 10–11. Berlin: Springer.
- & **Preisig, M. (1995)** Course of clinical cohort of unipolar, bipolar and schizoaffective patients: results of a prospective study from 1959 to 1985. *Schweizer Archiv für Neurologie und Psychiatrie*, **146**, 5–16.
- Bijl, R. V., Van Zessen, G. & Ravelli, A. (1998)** The Netherlands Mental Health Survey and Incidence Study (NEMESIS): objectives and design. *Social Psychiatry and Psychiatric Epidemiology*, **33**, 581–586.
- Cohen, P. & Cohen, J. (1984)** The clinician's illusion. *Archives of General Psychiatry*, **41**, 1178–1182.
- Coryell, W., Akiskal, H. S., Leon, A. C., et al (1994)** The time course of nonchronic major depressive disorder. Uniformity across episodes and samples. *Archives of General Psychiatry*, **51**, 405–410.
- de Graaf, R., Bijl, R. V., Smit, F., et al (2000a)** Psychiatric and sociodemographic predictors of attrition in a longitudinal study: the Netherlands Mental Health Survey and Incidence Study (NEMESIS). *American Journal of Epidemiology*, **152**, 1039–1047.
- , —, **Vollebergh, W. A. M. et al (2000b)** *Response and Non-response Third Wave: The Netherlands Mental Health Survey and Incidence Study (NEMESIS)*. Technical Report No. 11. Utrecht: Trimbos Institute.
- Eaton, W. W., Anthony, J. C., Gallo, J. J., et al (1997)** Natural history of diagnostic interview schedule/DSM-IV

CLINICAL IMPLICATIONS

- Half of those affected with major depressive episodes recovered within 3 months.
- The risk of chronicity (duration 24 months or more) was considerable and underlines the necessity of diagnosing and treating those at risk.
- Treated and untreated people affected with major depressive episodes share the same risk of chronicity.

LIMITATIONS

- In this study sample homeless people and long-term residents of care institutions were not represented, so the most serious and incapacitating forms of psychopathology were underrepresented, probably decreasing the reported chronicity rate.
- The course of major depressive episodes was not strictly assessed following DSM criteria, limiting the comparability of our results with other research.
- The follow-up period in this study was only 2 years and we have no data on the longer course of major depressive episodes in the general population.

JAN SPIJKER, MD, Netherlands Institute of Mental Health and Addiction, Utrecht and De Galderse Roos, Institute for Mental Health Care, Arnhem; RON de GRAAF, PhD, Netherlands Institute of Mental Health and Addiction, Utrecht; ROB V. BIJL, PhD, WODC, Research and Documentation Center of the Ministry of Justice, The Hague; AARTJAN T. F. BEEKMAN, MD, PhD, Netherlands Institute of Mental Health and Addiction, Utrecht and Department of Psychiatry, University of Amsterdam; JOHAN ORMEL, PhD, Department of Psychiatry, University of Groningen; WILLEM A. NOLEN, PhD, University Medical Centre, Utrecht and Altrecht Institute for Mental Health Care, Utrecht, The Netherlands

Correspondence: Jan Spijker, Netherlands Institute of Mental Health and Addiction (Trimbos Institute), PO Box 725, 3500 AS Utrecht, The Netherlands. Tel: +31 302971100; fax: +31 302971111; e-mail: JSpijker@trimbos.nl

(First received 6 November 2001, accepted 26 January 2002)

major depression. The Baltimore Epidemiologic Catchment Area follow-up. *Archives of General Psychiatry*, **54**, 993–999.

Frank, E., Prien, R. F., Jarret, R. B., et al (1991) Conceptualization and rationale for consensus definitions of terms in major depressive disorder. Remission, recovery, relapse and recurrence. *Archives of General Psychiatry*, **48**, 851–855.

Furukawa, T. A., Kiturama, T. & Takahashi, K. (2000) Time to recovery of an inception cohort with hitherto untreated unipolar major depressive episodes. *British Journal of Psychiatry*, **177**, 331–335.

Goldberg, D. P. & Williams, P. (1998) *A User's Guide to the General Health Questionnaire*. Windsor, Ontario: Nelson.

Hosmer, D. W. & Lemeshow, S. (1999) *Applied Survival Analysis: Regression Modeling of Time to Event Data*. Chichester: John Wiley & Sons.

Hunt, C. & Andrews, G. (1995) Comorbidity in the anxiety disorders: the use of a life-chart approach. *Journal of Psychiatric Research*, **26**, 467–480.

Judd, L. L. (1997) The clinical course of unipolar major depressive disorders. Commentary. *Archives of General Psychiatry*, **54**, 989–991.

—, **Akiskal, H. S., Maser, J. D., et al (1998)** A prospective 12-year study of subsyndromal and syndromal depressive symptoms in unipolar major depressive disorders. *Archives of General Psychiatry*, **55**, 694–700.

Keller, M. B., Shapire, R. W., Lavori, P. W., et al (1982) Recovery in major depression. Analysis with life tables and regression models. *Archives of General Psychiatry*, **39**, 905–910.

—, **Lavori, P. W., Mueller, T. I., et al (1992)** Time to recovery, chronicity and levels of psychopathology in major depression. *Archives of General Psychiatry*, **49**, 809–816.

Lyketsos, C. G., Nestadt, G., Cwi, J., et al (1994) The life chart interview: a standardized method to describe the course of psychopathology. *International Journal of Methods in Psychiatric Research*, **4**, 143–155.

Mueller, T. I., Keller, M. B., Leon, A. C., et al (1996) Recovery after 5 years of unremitting major depressive disorder. *Archives of General Psychiatry*, **53**, 794–799.

Smeets, R. M. W. & Dingemans, P. M. A. J. (1993) *Composite International Diagnostic Interview (CIDI), Version 1.1*. Amsterdam/Geneva: World Health Organization.

Solomon, D. A., Keller, M. B., Leon, A. C., et al (1997) Recovery from major depression. A 10-year

prospective follow-up across multiple episodes. *Archives of General Psychiatry*, **54**, 1001–1006.

Spijker, J., Bijl, R. V., De Graaf, R., et al (2001) Care utilisation and outcome of DSM-III-R major depression in the general population. Results of the Netherlands Mental Health Survey and Incidence Study (NEMESIS). *Acta Psychiatrica Scandinavica*, **104**, 19–24.

SPSS (1998) *SPSS for Windows, Version 8.0*. Chicago, IL: SPSS Inc.

Vollebergh, W. A. M., Iedema, J., Bijl, R. V., et al (2001) The structure and stability of common mental disorders: the NEMESIS study. *Archives of General Psychiatry*, **58**, 597–603.

Wittchen, H. U. (1994) Reliability and validity studies of the WHO-CIDI: a critical review. *Journal of Psychiatric Research*, **28**, 57–84.

World Health Organization (1990) *Composite Diagnostic Interview (CIDI), Version 1.0*. Geneva: WHO.

BJPpsych

The British Journal of Psychiatry

Duration of major depressive episodes in the general population: results from The Netherlands Mental Health Survey and Incidence Study (NEMESIS)

JAN SPIJKER, RON de GRAAF, ROB V. BIJL, AARTJAN T. F. BEEKMAN, JOHAN ORMEL and WILLEM A. NOLEN

BJP 2002, 181:208-213.

Access the most recent version at DOI: [10.1192/bjp.181.3.208](https://doi.org/10.1192/bjp.181.3.208)

References

This article cites 19 articles, 2 of which you can access for free at:
<http://bjp.rcpsych.org/content/181/3/208#BIBL>

Reprints/ permissions

To obtain reprints or permission to reproduce material from this paper, please write to permissions@rcpsych.ac.uk

You can respond to this article at

[/letters/submit/bjprcpsych;181/3/208](http://bjp.rcpsych.org/letters/submit/bjprcpsych;181/3/208)

Downloaded from

<http://bjp.rcpsych.org/> on July 26, 2016
Published by The Royal College of Psychiatrists
